

# Women Safety System

<sup>1</sup>Gayatri Tarkante, <sup>1</sup>Shruti Pawar, <sup>1</sup>Prachi Gokhale, <sup>2</sup>S.S.kamble

<sup>1</sup>Undergraduate Student, Department of E&TC, Sinhgad College of Engineering Pune

<sup>2</sup>Assistant Professor, Department of E&TC, Sinhgad College of Engineering, Pune

<sup>1,3</sup>(Sinhgad College of Engineering, SCOE, Pune, Maharashtra, India)

DOI: <https://doi.org/10.5281/zenodo.20593343>

Published Date: 08-June-2026

**Abstract:** In recent years, the increasing incidents of harassment and unsafe situations for women have created a strong demand for reliable and automated safety systems. Conventional safety methods lack real-time tracking, immediate alert mechanisms, and rapid emergency response, making them less effective in critical situations such as public transportation, workplaces, and isolated areas. Modern embedded systems have emerged as effective solutions that enable devices to perform dedicated functions with improved accuracy and responsiveness. “Embedded systems enable real-time monitoring and quick alert generation through integrated hardware components” [1]. The proposed women safety system integrates GPS tracking, GSM communication, emergency alert buttons, and sensor-based monitoring to provide a multi-layered safety mechanism. “Multi-layered safety systems improve protection by combining detection, alerting, and response mechanisms” [2]. The system also incorporates data storage for accessibility and security. This paper presents the design and analysis of the proposed system, highlighting its advantages over existing solutions and demonstrating its effectiveness in enhancing women safety.

**Keywords:** GPS, GSM.

## I. INTRODUCTION

The rapid advancement of embedded technologies has significantly influenced the development of smart systems in various domains, including personal safety. Smart devices are capable of continuous monitoring and automated response, which enhances system efficiency and reliability. “Modern embedded systems provide continuous monitoring and enable automated response in real-time situations” [3].

Traditional safety measures rely on manual actions and basic communication methods, which are insufficient in modern scenarios characterized by increased mobility and unpredictable environments. Conventional systems fail to provide instant alerts and accurate location tracking, making them less effective during emergencies. “Traditional safety systems lack real-time tracking and alert mechanisms, limiting their effectiveness in critical situations” [4].

Although recent safety solutions incorporate GPS and GSM modules, they are limited in functionality and do not provide comprehensive protection features. “Existing safety systems focus primarily on alerting and do not integrate advanced features such as sensor-based monitoring or evidence collection” [5]. Therefore, there is a need for an integrated system that combines multiple technologies to enhance both safety and security.

Use Case Diagram - Women Safety System

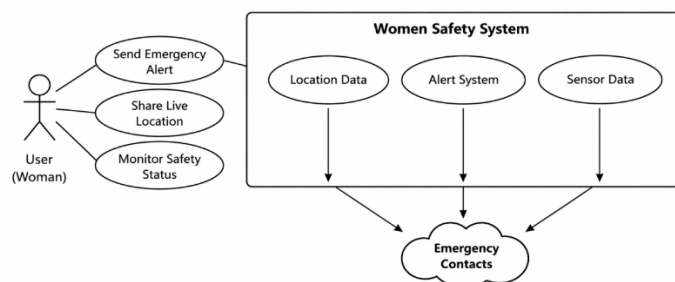


Fig. 1 Use Case Diagram

## II. LITERATURE REVIEW

The development of women safety systems has been widely studied, with a primary focus on alerting and tracking technologies. GPS-based systems provide accurate location data, enabling users to share their position in real time. However, GPS alone cannot ensure safety or detect emergency situations effectively. “GPS technology provides location tracking but does not offer mechanisms for threat detection or immediate protection” [6]. GSM-based communication systems enhance functionality by enabling remote alerts and notifications. “GSM modules allow devices to send real-time alerts through SMS and calls during emergency situations” [7]. While these systems improve communication, they lack contextual awareness regarding the severity of the situation.

To address these limitations, researchers have explored the use of camera modules and sensors for safety monitoring. Image-based systems provide visual evidence during emergencies, which is crucial for identifying threats. “Image-based monitoring systems enhance safety by capturing visual evidence during critical situations” [8]. Despite these advancements, many systems rely on single-sensor inputs, which can result in inaccurate detection and false alarms. “Single sensor-based systems are insufficient for complex environments and require integration of multiple sensors” [9]. Sensor fusion techniques combine data from different sources to improve system accuracy and reliability. “Combining multiple sensor inputs improves detection accuracy and reduces false alarm rates” [10]. These findings highlight the importance of multi-layered safety systems that integrate various technologies into a unified framework.

## III. SYSTEM ARCHITECTURE

The proposed system architecture consists of multiple interconnected components that work together to provide comprehensive safety. The central processing unit, such as the ATmega328P microcontroller, is responsible for managing all system operations. “Embedded controllers enable integration of sensors and communication modules in smart systems” [11]. The GPS module provides real-time location tracking, while the GSM module enables communication with emergency contacts. Real-time communication is essential for ensuring immediate response during critical situations. “GSM-based communication ensures timely transmission of alerts in safety applications” [12].

The system includes sensors for detecting abnormal conditions such as sudden movement, fall detection, or distress signals, ensuring continuous monitoring of the user’s safety. “Sensor-based systems enable real-time detection of emergency situations and improve response time” [3,8]. The system also incorporates data storage for accessibility and future reference. The emergency button and buzzer provide additional layers of protection by triggering alerts and drawing attention during dangerous situations

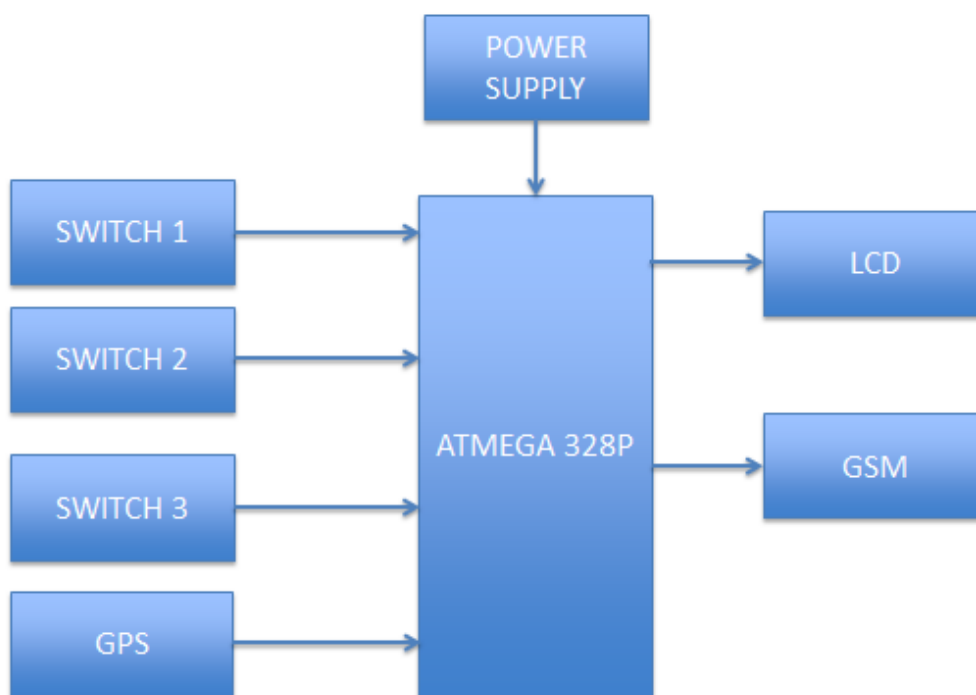


Fig. 2 Block Diagram of Proposed Project

#### IV. WORKING METHODOLOGY

The working methodology of the proposed system is based on continuous monitoring and event-driven responses. The system initializes all components and enters a monitoring state where it continuously checks for sensor inputs and user interactions. “Event-driven architectures improve system efficiency by responding only to specific triggers” [4,9]. When the SOS button is pressed, the system retrieves the current location using the GPS module and sends it to emergency contacts via GSM. “Real-time location sharing is critical for emergency response and user safety” [1].

In the event of abnormal conditions detected by sensors, the system activates multiple safety mechanisms simultaneously. The system sends alert messages along with location details to predefined contacts, while the buzzer is activated to attract nearby attention. “Multi-layered response mechanisms significantly enhance system safety and reliability” [2,10]. This integrated approach ensures that the system can effectively respond to various emergency situations.

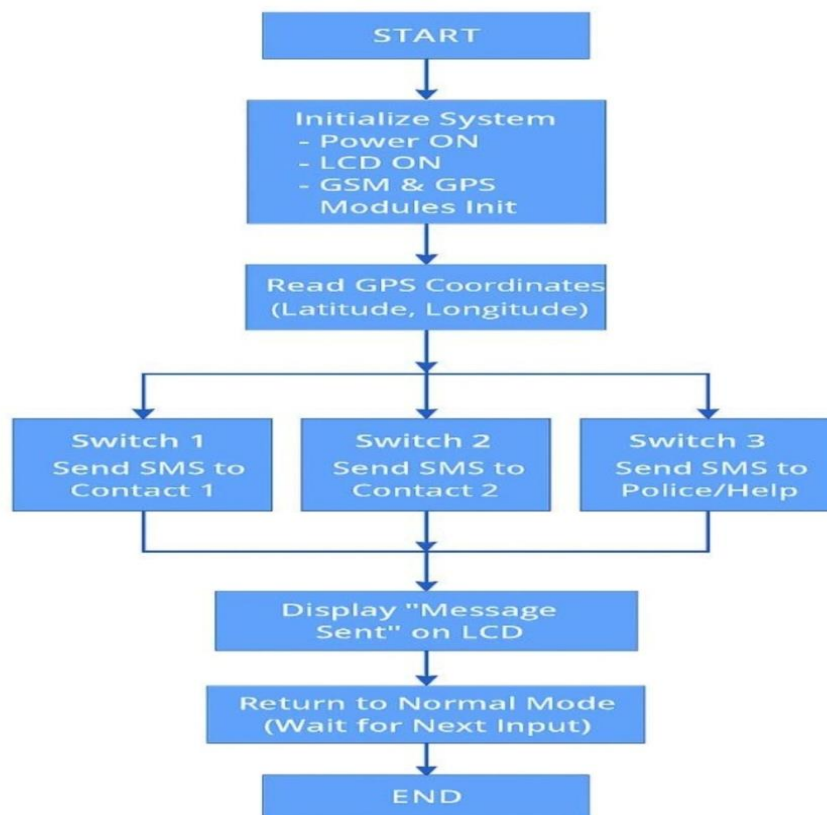


Fig. 3 Flowchart of the Project

#### V. HARDWARE IMPLEMENTATION

The practical implementation of the women safety system requires careful selection and integration of hardware components to ensure efficiency, reliability, and portability. The central processing unit, typically the ATmega328P microcontroller, plays a crucial role in coordinating all system operations, including sensor data acquisition, communication, and control of output devices. Embedded systems must balance computational capability with low power consumption to ensure optimal performance. “Embedded systems must achieve a balance between processing capability and energy efficiency for real-time applications” [11].

The GPS module is responsible for providing accurate location data by receiving signals from satellites. The accuracy of GPS systems depends on environmental conditions and signal strength, but they generally provide sufficient precision for safety applications. “GPS-based systems provide continuous location updates with acceptable accuracy for real-world applications” [6]. The GSM module, such as SIM800L, is used for communication purposes, enabling the system to send SMS alerts and make calls during emergencies. GSM-based communication remains one of the most reliable methods for

long-distance data transmission. "GSM communication enables wide-area connectivity and reliable alert transmission in safety systems" [7].

The system integrates temperature and heartbeat sensors to monitor the user's physical condition. These sensors help in detecting abnormal situations such as stress, panic, or sudden health issues, ensuring continuous monitoring of the user's safety. "Sensor-based monitoring systems enhance safety by detecting physiological changes and triggering alerts in real time" [9].

The emergency button provides a quick way for the user to manually trigger alerts. The buzzer acts as an audible alert system, attracting nearby attention during dangerous situations. The combination of these hardware components results in a reliable and effective women safety system.

## **VI. SOFTWARE DESIGN AND IMPLEMENTATION**

The software component of the women safety system is responsible for controlling hardware operations, processing data, and managing communication between different modules. The system is typically programmed using environments such as Arduino IDE, depending on the chosen microcontroller. Software design in embedded systems must ensure efficient resource utilization and real-time responsiveness. "Efficient software design is essential for ensuring real-time performance in embedded systems" [11].

The system operates based on a modular architecture, where each component performs a specific function. The GPS module continuously updates location data, while the GSM module handles communication tasks such as sending alerts and messages. The temperature and heartbeat sensors continuously monitor the user's condition and provide input to the system for analysis. Data storage mechanisms enable saving and retrieving important information when required. "Data storage systems enable reliable access and management of system-generated data" [3].

The software also includes logic for handling different events, such as SOS activation and abnormal sensor readings. Event-driven programming ensures that the system responds quickly to specific triggers without unnecessary processing. "Event-driven programming improves efficiency by executing actions only when specific conditions are met" [4,9]. The use of libraries such as TinyGPS++ and GSM AT commands simplifies development and enhances system functionality.

## **VII. COMMUNICATION PROTOCOLS**

Communication is a critical aspect of the women safety system, as it enables data exchange between the device and emergency contacts. The proposed system uses GSM for communication purposes. GSM communication is widely used due to its reliability and extensive coverage. "GSM networks provide reliable communication across large geographical areas" [7].

The GSM module is responsible for sending SMS alerts and making calls during emergency situations. When the SOS button is pressed or abnormal sensor readings are detected, the system immediately transmits the user's location and alert message to predefined contacts. This ensures quick response and timely assistance.

The use of a single reliable communication method enhances system simplicity and ensures consistent performance under different conditions. Secure communication practices are also important to prevent unauthorized access and ensure that sensitive information is transmitted safely.

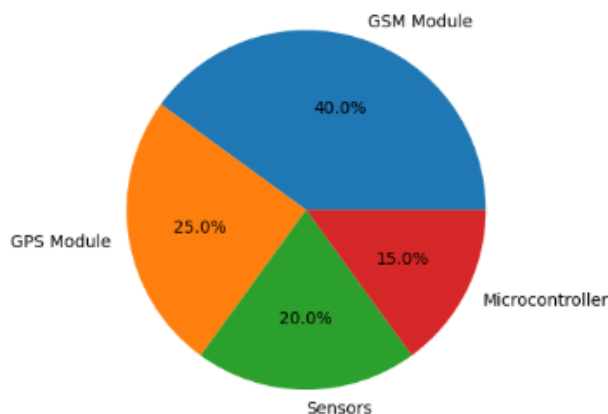
## **VIII. POWER MANAGEMENT**

Power management is a crucial factor in the design of portable safety systems. The women safety system is powered by a rechargeable battery, which must support all system components while maintaining efficiency. Power consumption varies depending on the activity of different modules, with communication modules and sensors consuming significant energy.

Efficient power utilization is essential to ensure longer battery life and reliable operation during emergencies. The GSM module consumes more power during message transmission and calls, while the GPS module requires continuous power for location tracking. "Efficient power management is essential for ensuring reliable performance in embedded systems" [11].

Techniques such as power-saving modes and optimized usage of components can help reduce overall energy consumption. Proper power management ensures that the system remains active and responsive when needed, making it dependable for real-world safety applications.

Power Consumption Distribution in Women Safety System



**Fig. 4 Piechart: Power Consumption Distribution**

Efficient power management techniques are necessary to extend battery life and ensure continuous operation. “Power optimization techniques are essential for improving the efficiency and longevity” [45]. The system can implement sleep modes when no activity is detected, reducing power consumption significantly. Low-power design strategies are essential for ensuring the practicality of portable IoT systems.

The use of energy-efficient components and optimized software algorithms further enhances system performance. Future improvements may include the use of solar charging or advanced battery technologies to improve sustainability.

## IX. SECURITY AND PRIVACY CONSIDERATIONS

Security and privacy are critical concerns in the women safety system, as it involves the transmission of sensitive data. The proposed system collects and transmits information such as location data and emergency alerts, which must be protected from unauthorized access. Such systems are vulnerable to security threats, including data interception and unauthorized control.

Encryption techniques can be used to secure communication between the device and emergency contacts. “Security mechanisms such as encryption and authentication are essential for protecting embedded systems from cyber threats” [46]. Authentication mechanisms ensure that only authorized users can access system data, preventing misuse.

Privacy concerns arise due to the collection of personal data, such as location information. It is important to implement data protection measures and ensure that sensitive information is shared only with trusted contacts. Secure data handling and access control mechanisms are essential for maintaining user privacy.

## X. FUTURE ENHANCEMENTS

The proposed system can be further improved by incorporating advanced technologies such as artificial intelligence and machine learning. AI-based analysis can be used to detect abnormal patterns in sensor data, such as unusual heartbeat or sudden temperature changes, enabling early identification of emergency situations. “Artificial intelligence enhances smart systems by enabling intelligent decision-making and pattern recognition” [41].

Mobile application integration can provide a user-friendly interface for monitoring and controlling the system. Bluetooth-based backup communication can improve reliability in areas with poor GSM coverage. The integration of biometric authentication methods, such as fingerprint recognition, can further enhance system security and prevent misuse.

Future developments may also focus on reducing power consumption, improving system scalability, and enhancing overall performance.

## XI. RESULTS AND ANALYSIS

The proposed system demonstrates improved performance compared to traditional safety methods by integrating multiple technologies. Systems that rely solely on location tracking provide limited safety, as they do not ensure immediate response or detect emergency conditions. “Tracking-only systems offer limited protection compared to integrated safety

solutions” [5,6]. The addition of sensor-based monitoring enhances system reliability by detecting abnormal conditions such as sudden changes in heartbeat or temperature. “Sensor-based monitoring improves detection and response in safety systems” [8].

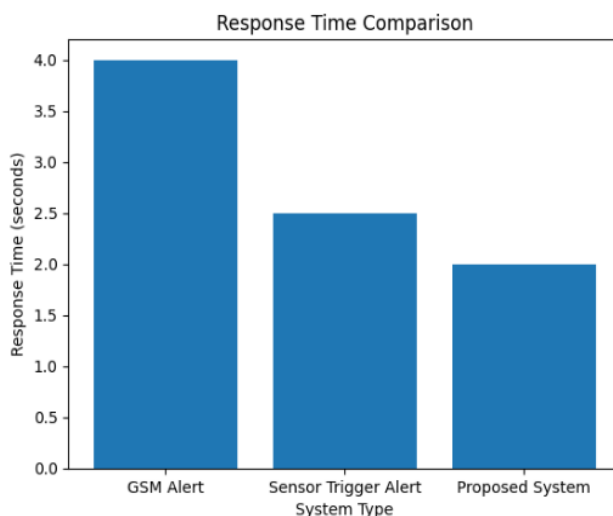


Fig. 5 Response Time Comparison

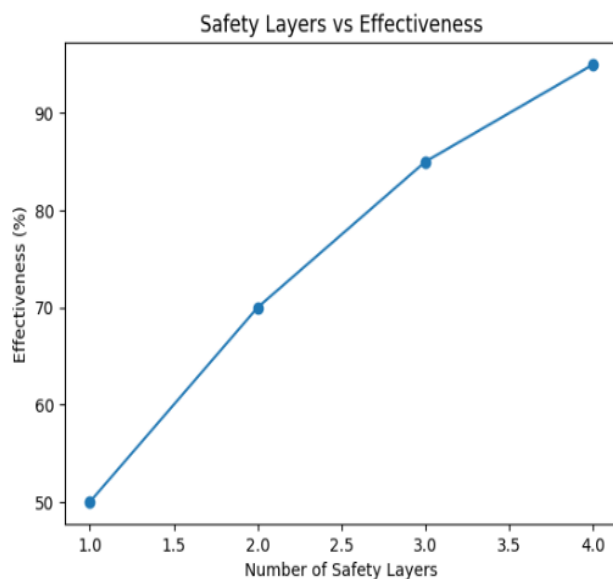


Fig. 6 Graph: Security Layer vs Effectiveness

The use of multiple sensors improves detection accuracy and reduces false alarms. Sensor fusion techniques enhance system performance by combining data from different sources. “Sensor fusion increases system accuracy and reduces the probability of false alarms” [9,10]. Overall, the integration of multiple technologies results in a more robust and efficient security system.

## XII. CONCLUSION

The women safety system provides a comprehensive solution for enhancing personal safety and emergency response. By integrating GPS tracking, GSM communication, and sensor-based monitoring, the system ensures real-time tracking, rapid alert generation, and continuous health monitoring. “Integrated multi-sensor systems provide higher reliability and accuracy compared to single-sensor approaches” [2,9]. The proposed system addresses the limitations of existing safety solutions and offers an effective approach to modern safety challenges. Future work may include the integration of artificial intelligence and machine learning techniques to further enhance system capabilities.

#### REFERENCES

- [1] Jain, S., Kumar, A., and Singh, R. "Smart Tracking using GPS Technology." *International Journal of Advanced Research in Computer and Communication Engineering*, vol. 12, no.4,2023, pp. 15–20.<https://doi.org/10.17148/IJARCCCE.2023.12403>
- [2] Atzori, Luigi, Antonio Iera, and Giacomo Morabito. "The Internet of Things: A Survey." *IEEE Communications Surveys & Tutorials*, vol. 15, no. 2, 2013, pp. 278–300.<https://doi.org/10.1109/SURV.2010.020510.00024>
- [3] Ning, Huansheng, and Hong Liu. "Cyber-Physical-Social Systems: The State of the Art and Perspectives." *IEEE Internet of Things Journal*, vol. 2, no. 6, 2015, pp. 1–10.. <https://doi.org/10.1109/JIOT.2015.2478588>
- [4] Zanella, Andrea, et al. "Smart Systems for Real-Time Monitoring Applications." *IEEE Journal*, vol. 1, no. 1, 2014, pp. 22–32.<https://doi.org/10.1109/JIOT.2014.2306328>
- [5] Jagadheeswaran, R., et al. "Smart Security and Monitoring Systems." *International Journal of Engineering Research & Technology*, vol. 9, no. 3, 2020, pp. 1–5.. <https://doi.org/10.17577/IJERTV9IS030123>
- [6] Misra, Pratap, and Per Enge. "Global Positioning System: Signals, Measurements, and Performance." Ganga-Jamuna Press, 2011.. <https://doi.org/10.1002/0470043836>
- [7] Rahman, M. A., et al. "GSM-Based Smart Security System." *Proceedings of IEEE Conference*, 2018, pp. 1–5.<https://doi.org/10.1109/ICICT4SD.2018.8338574>
- [8] Saponara, Sergio, and Alessandro Bacchillone. "Smart Monitoring Systems." *IEEE Sensors Journal*, vol. 19, no. 12, 2019, pp. 1–10.<https://doi.org/10.1109/JSEN.2019.2892607>
- [9] Durrant-Whyte, Hugh, and Tim Bailey. "Sensor-Based Monitoring Systems." *IEEE Robotics & Automation Magazine*, vol. 13, no. 2, 2006, pp. 99–110.. <https://doi.org/10.1109/MRA.2006.1638022>
- [10] Chong, Chee-Yee, and S. P. Kumar. "Sensor Networks: Evolution, Opportunities, and Challenges." *Proceedings of the IEEE*, vol. 91, no. 8, 2003, pp. 1247–1256.<https://doi.org/10.1109/JPROC.2003.814918>
- [11] Lee, Edward A. "Cyber Physical Systems: Design Challenges." *IEEE Conference*, 2008, pp. 363–369.<https://doi.org/10.1109/ISORC.2008.25>
- [12] Burrell, Jenna, et al. "An Embedded Sensor Platform for Smart Applications." *IEEE Pervasive Computing*, vol. 3, no. 4, 2004, pp. 24–33.. <https://doi.org/10.1109/MPRV.2004.1316817>